



35
YEARS
OF GIVING CHILDREN BACK
THEIR CHILDHOOD
1989 - 2024



ANNUAL REPORT

2024

TABLE OF CONTENTS

Chapter 1

CNCF in 2024

08

Message from CEO and Executive Summary

10

Our Vision, Mission and Core Values

12

Our Approach

14

2024 at a Glance

18

2024 in Numbers

Chapter 2

Our Programmes

22

Education Summary

24

Healthcare Summary

26

Community Development

28

Rural Capital Assistance

Chapter 3

Country Programme Highlights

32

Vietnam Highlights

34

Mongolia Highlights

Chapter 4

Global Goals & CNCF's Role

38

CNCF and the SDG Goals

Chapter 5

Governance, Finance & Accountability

42

Financial Statements

43

Finance at a Glance

44

Governance Statement

45

Our Board Members

Chapter 6

Our Noble Circles of Support

48

Our Donors, Partners and Supporters

Chapter 7

Join Us: Be Part of the Change

52

Vision and Strategy

54

Give Hope Today

55

How to Join Us

FOREWORDS



"CNCF has not only transformed the lives of children in Mongolia but has also helped shape how the capital addresses child poverty and education."

Fiona Blyth
His Majesty's
British Ambassador to Mongolia



"CNCF's work reflects compassion in action and a real vision for lasting change."

George Windsor
Earl of St Andrews



"CNCF's cohesive and collaborative team is truly commendable. On behalf of Mongolian psychologists, I personally extend my heartfelt thanks."

Dr. Batsukh Sh.
Head of the Mongolian
Psychologists Association

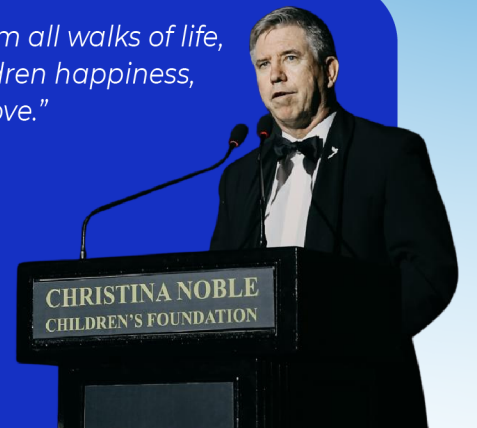
"Most importantly, CNCF's focus is child protection throughout society and being a role model for the country of Mongolia."

Oyundari Navaanyunden
Head of Human Rights
Commission and Member
of Parliament Mongolia



"CNCF is made up of people from all walks of life, united by a passion to give children happiness, belonging, and unconditional love."

Ian Gibbons OBE
Her Majesty's Former
British Consul General to
Vietnam (2016–2020),
Chairman of UK-ASEAN
Business Council



"CNCF's Education Programme ignites confidence and equips young students for their future careers."

Asso. Prof.Ph.D
Nguyen Minh Tam,
Chancellor,
Vietnam National
University



"We are deeply proud of our enduring partnership with the Christina Noble Children's Foundation and the sustainable, life-changing outcomes we have achieved together."

Professor Martin T. Corbally
Consultant Paediatric Surgeon,
Professor and Head of Department,
Royal College of Surgeons Bahrain,
Co-Founder of Operation Childlife



CHAPTER 01

CNCF in 2024

- 08** Message from CEO and Executive Summary
- 10** Our Vision, Mission, and Core Values
- 12** Our Approach
- 14** 2024 at a Glance
- 18** 2024 in Numbers



CEO MESSAGE AND EXECUTIVE SUMMARY

“It is through our shared commitment that we are able to transform hardship into hope, to create opportunities where none existed, and to ensure that the most vulnerable people are not only protected, but given the chance to thrive.”



Before sharing the impact of our work over the past year, I want to take a moment to sincerely thank each of you - our partners, funders, and supporters - who make our work possible. Your belief in our mission, your generosity, and your willingness to stand beside us, year after year, are what allow us to reach children and families who might otherwise be forgotten.

It is through our shared commitment that we are able to transform hardship into hope, to create opportunities where none existed, and to ensure that the most vulnerable people are not only protected, but given the chance to thrive. The following reflects what we have achieved together.

In 2024, the Christina Noble Children's Foundation directly supported **7,319** children across Vietnam and Mongolia through our life-changing programmes. In addition, our broader outreach and community-level interventions indirectly benefited **21,539** families and community members, helping to transform lives by creating opportunities where none previously existed.

Over the past year, we provided **4,029** medical consultations and treatments. A total of **921** children and their families attended **17** health talks and training sessions organized by CNCF. To monitor child protection, track progress, and respond to challenges related to poverty and limited access to services, we conducted **809** project visits. We also delivered **783** individual psychological therapy sessions to support children's mental health and emotional well-being.

In education and youth empowerment, **578** students successfully graduated from our programmes and are continuing to thrive in their academic and professional journeys. A total of **147** students were paired with 111 mentors to support their transition from university to the workplace. Meanwhile, **175** children in residential care received comprehensive support, including education, nutrition, and healthcare, in safe and nurturing environments.

None of this would be possible without the generosity and partnership of our supporters who walk this journey with us. For over three decades, CNCF has stayed mission-driven and results-focused, ensuring every resource creates impact where needed most. Our vision is simple: no child should be invisible, and every child deserves a full, dignified life. Thank you to our partners, global community, and the children and communities we're blessed to serve; your resilience inspires us every day.

Helenita Noble MBE
Chief Executive Officer

OUR VISION, MISSION, AND CORE VALUES

Our Vision

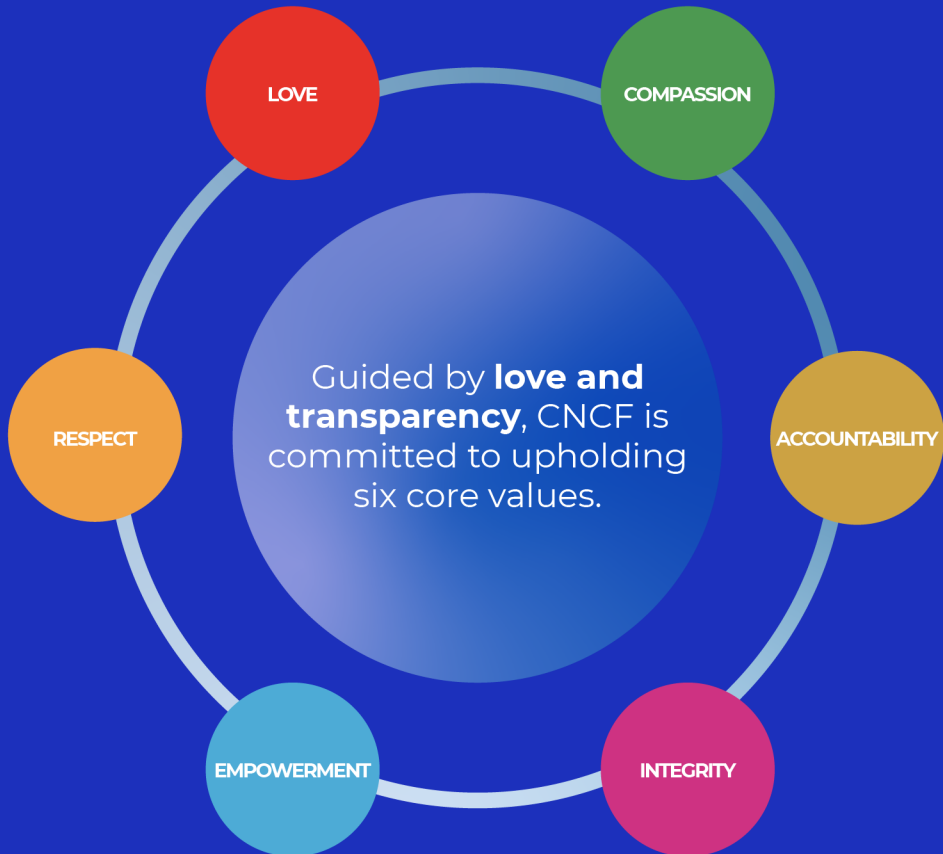
With unwavering compassion and a commitment to long-term transformation, the Christina Noble Children's Foundation envisions a world where every child is free from suffering, poverty, exploitation, and fear.

Guided by the belief that every child deserves love, dignity, and the opportunity to thrive, CNCF strives to be a leading force in child protection and development.

Our Mission

CNCF's mission is to **empower vulnerable children and their communities through Protection, Education, Healthcare, Community Development and Rural Capital Assistance.**

Our Core Values



*Christina Noble

Love

We place genuine care and affection at the heart of all our work, ensuring every child feels seen, valued, and supported.

Compassion

We respond to children's needs with empathy and kindness, seeking to understand their experiences and alleviate their suffering.

Respect

We honor each child's dignity and rights, treating them as individuals deserving of freedom, choice, and inclusion.

Accountability

We take responsibility for our decisions and their impact, continually evaluating our programmes to ensure they deliver meaningful, measurable change.

Empowerment

We equip children and communities with the tools, knowledge, and confidence they need to claim their rights and shape their own futures.

Integrity

We act with honesty and moral courage in all our interactions, maintaining transparency to build and earn lasting trust.

OUR APPROACH

The Christina Noble Children's Foundation (CNCF) adopts a holistic, child & youth-centred approach to addressing the root causes and long-term impacts of poverty. With over 35 years of operational experience, our integrated model has consistently delivered measurable, sustainable outcomes—empowering vulnerable children and youth to access their rights, reach their full potential, and lead dignified, self-determined lives.

Our approach is structured around four interconnected pillars:

Child & Youth Protection and Safeguarding

CNCF prioritises the safety of children, enforcing a zero-tolerance abuse policy. Guided by the UN Convention on the Rights of the Child and international standards, we implement protection policies, mandatory training, accessible reporting channels, and community partnerships to ensure every child grows up safe, respected, and free from harm.

Education

CNCF offers inclusive lifelong learning from early childhood to tertiary, ensuring equitable access and tailored support for seamless transitions. Through the Christina Noble Education Programme and Noble Scholarships, we bolster youth resilience, leadership, and employability with soft skills, career guidance, and vocational training, aiming to reduce underemployment and foster adaptability.

Healthcare

CNCF ensures children's holistic wellbeing by providing quality physical, emotional, and mental healthcare while strengthening systems through its Medical Exchange Programme. By enabling knowledge transfer from international surgeons to local paediatric teams, we build sustainable, high-standard care, reduce preventable mortality, and support long-term, locally led paediatric healthcare outcomes.

Community Development & Rural Capital Assistance

CNCF fosters protective, enabling environments by offering safe housing, family support, and targeted interventions in high-risk areas. In underserved communities, we provide capital assistance to build schools, bridges, water, and sanitation systems—bolstering resilience, equity, and empowerment so all children and families thrive in secure, nurturing communities.



2024 AT A GLANCE

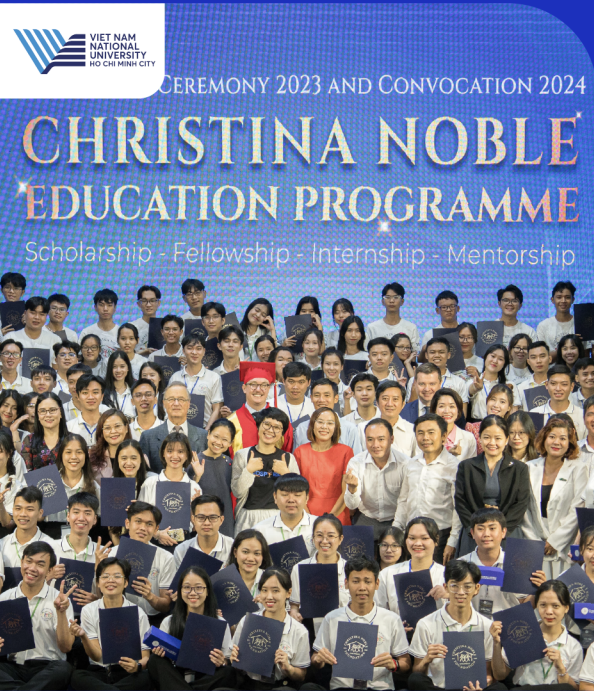


Celebrating 20 Years of Partnership with Operation Childlife

This year marks two decades of partnership between the Christina Noble Children's Foundation (CNCF) and Operation Childlife (OCL), a collaboration that continues to transform paediatric healthcare in Vietnam and Mongolia. In addition to the annual medical delegation, the programme has, since inception, provided expert consultation on 1,188 complex cases, with 641 children receiving life-saving surgical interventions. These outcomes are a testament to the enduring commitment of our global medical teams and partners, and to the power of cross-border collaboration in delivering sustainable, high-impact healthcare to the most vulnerable.

Empowering Future Leaders: Christina Noble Education Programme (CNEP)

This year, 147 new determined students benefited from CNCF's CNEP in Vietnam. The innovative programme in partnership with Vietnam National University and affiliate universities addresses educational challenges and helps students from disadvantaged backgrounds transition to professional careers, offering scholarships, fellowships, internships, and mentorship to equip students with the skills and experiences needed for future success.



Bridges for a Safer Future with Partners Harbour Energy

CNCF completed the construction of a further two new bridges in rural Mekong Delta Vietnam, providing safer, more reliable access to schools for children in remote communities. Funded by Harbour Energy Vietnam, these bridges have significantly improved connectivity to education, healthcare, and local markets—transforming daily life for entire villages. In total, the infrastructure benefits 1,250 direct beneficiaries, and an estimated 18,696 indirect beneficiaries, offering hope, safety, and long-term opportunity for the next generation.

CNCF Partners with Gravity Water

In response to the growing challenges of climate change and saline water intrusion in Vietnam's Mekong Delta, CNCF launched a strategic partnership with Gravity Water to provide sustainable clean water solutions to schools across the region. By harvesting and purifying rainwater, this initiative aims to ensure safe drinking water for approximately 2,700 students and school staff annually, directly improving health and education outcomes. We are deeply grateful to Gravity Water for their commitment to supporting disadvantaged communities in Vietnam and helping build a better future.



2024 AT A GLANCE



Forging New Partnerships with the Lorinet Foundation for Youth Rehabilitation

CNCF launched a three-year strategic partnership with the Lorinet Foundation to strengthen juvenile rehabilitation in Mongolia. The collaboration focuses on expanding access to education, vocational training, and tailored psychosocial support for children in detention. By equipping at-risk youth with the tools to reintegrate into society as empowered, contributing members, this partnership fosters long-term, systemic change for some of Mongolia's most marginalised young people.

International Community Development Award from the Royal College of Surgeons Ireland – Bahrain (RCSIB)

CNCF received the International Community Development Award from RCSI Bahrain, accepted by CEO Helenita Noble at King Hamad Medical University in June. Our partnership with RCSI Bahrain— through Operation Childlife—has provided immersive global health experiences to medical and nursing students since 2014, transforming lives and strengthening paediatric health systems.



30 Years of Unwavering Support from Ernst & Young



For three decades, Ernst & Young has generously provided pro bono audit and advisory services to CNCF, strengthening our governance and ensuring greater impact for children. We are especially grateful to Ernst & Young Mongolia for mentoring our graduating students in financial literacy—empowering them with skills for a more secure future.



Honoured by British Chamber of Commerce with the 35 Years in Vietnam Award

CNCF received the British Chamber of Commerce Vietnam's 35 Years in Vietnam award, honouring over three-decade commitment to child welfare and community development alongside government authorities, partners, and resilient children.





VIET NAM UNION OF FRIENDSHIP ORGANIZATIONS

ACKNOWLEDGES

Christina Noble Children's Foundation

For the significant contributions
to the sustainable development of Viet Nam

Recognition to Vietnam's Development from Government

At Hanoi's NGO Contribution Recognition Ceremony, CNCF was honoured for 35 years of child advocacy, education, healthcare, and community development, underscoring our commitment to sustainability and change for Vietnam's youth.

2024 IN NUMBERS

7,319

Children

directly benefited from CNCF's programmes



CNCF's broader outreach and community-level interventions indirectly benefited

21,539

families and wider communities members



4,029

Medical

consultations and treatments provided throughout the year

921

Children and families attended

17

health talks and training organised by CNCF



783

Individual psychological therapy sessions

delivered to support children's mental health and emotional well-being



578

Students successfully graduated

from our programmes and are continuing to thrive in education and employment



809

Project visits

conducted to ensure child protection, monitor progress, and address the impacts of poverty and limited access to basic services

175

Residential children

received comprehensive care, including education, nutrition, and healthcare

147

students were paired with

111 mentors

to support their transition from university to the professional world

CHAPTER 02

Education, Healthcare & Community Impact

22 Education Summary

24 Healthcare Summary

26 Community Development
Summary

28 Rural Capital Assistance
Summary



EDUCATION SUMMARY

ACHIEVEMENTS

Since inception in 1989

70,840 CHILDREN gained access to education

55,457 CHILDREN supported with school fees through Child Sponsorship Program

5,669 SCHOLARSHIPS awarded for School and Higher Education

16,601 CHILDREN participated in arts, music, and sports activities

OBJECTIVE

CNCF advances inclusive, equitable, and quality education for children and youth from marginalized and vulnerable communities, ensuring they have the tools, support, and opportunities to overcome adversity and reach their full potential. CNCF's educational programmes adopt a holistic approach, addressing not only academic needs but also the emotional, psychological, and social dimensions of development.

APPROACH

CNCF delivers targeted educational support, life skills training, mentorship to empower children and youth, enabling access to meaningful learning and pathways to sustainable employment. Our programmes respond to the challenges of youth underemployment by building relevant skills aligned with current and future labour market demands.

Beyond the classroom, CNCF fosters creativity, resilience, and physical well-being through access to arts, sports, and extracurricular learning. For youth in conflict with the law, CNCF provides education, vocational training, and psychosocial support within rehabilitation settings, promoting reintegration and social inclusion.

Through these integrated interventions, CNCF helps break the intergenerational cycle of poverty and exclusion, promoting long-term, sustainable development and supporting young people to become active and empowered contributors to their communities.



"I joined CNCF's Child Sponsorship Programme in 2007, when I was just seven years old. My father had passed away in an accident three years earlier, and my mother—suddenly left to care for two young children—was overwhelmed and heartbroken. Life during that time was extremely difficult. Looking back, it's hard to think about how uncertain everything felt.

CNCF's support came at a time when we truly needed it. The sponsorship programme helped me stay in school and gave my family some stability when we had very little. That foundation stayed with me as I grew up, and after graduating from high school, I was fortunate to receive a scholarship through CNCF's Education Scholarship Programme.

Thanks to this support, I've been able to pursue a degree in pharmacy at a private medical university. I'm now in my fourth year, with two more to go, and I'm working hard toward my dream of entering the healthcare field. CNCF's scholarship eased the financial pressure of university and gave me the confidence and opportunities I never thought possible.

CNCF has played a central role in my journey—not just in helping me receive an education, but in giving my family hope. Their support changed the direction of my life, and for that, I will always be grateful."

CNCF Noble Scholarship Programme Beneficiary



HEALTHCARE SUMMARY

ACHIEVEMENTS

Since inception in 1989

211,160 **CHILDREN**
received
life-saving medical
treatments and
check-ups

24,928 **CHILDREN**
received
psychological
support and
counselling

4,299 **CHILDREN**
treated at
CNCF's Medical
Centre with
comprehensive care

602 **SURGERIES**
performed with
international
surgical teams

OBJECTIVE

At CNCF, we believe every child has the right to grow up healthy, supported, and free from preventable suffering. Our health and well-being programmes are dedicated to improving the lives of vulnerable children and families by ensuring access to quality medical care, emotional support, and essential health services—responding to urgent needs and long-term wellbeing.

APPROACH

CNCF partners with trusted medical professionals, hospitals and local organisations to deliver critical healthcare where it's most needed. From life-saving surgeries to advanced treatments, we remove financial barriers and support families in crisis. Our residential healthcare services offer continuous medical care, rehabilitation and psychosocial support in a family-like environment for orphaned and impoverished children.

Recognising that healing extends beyond the physical, we integrate mental-health services—art therapy, play therapy and cognitive-behavioural support—to guide traumatised children. Routine check-ups, emergency care and specialist referrals are available to programme participants and surrounding communities, forming a holistic model that restores dignity, strengthens families and lays the foundation for healthier futures.



"I was born with a congenital eye condition, but because of financial constraints, it went undiagnosed for many years. As time went on, my vision deteriorated quickly. I struggled more and more with daily activities, and it affected both my confidence and my ability to keep up in school.

Everything changed when CNCF stepped in through their healthcare programme. They supported me in getting the medical care I needed, including a successful eye operation that significantly improved my vision. Being able to see clearly again has made a real difference in my life—it's something I no longer take for granted.

I'm deeply grateful to CNCF and the doctors who helped me through this process. Their support was both practical and reassuring. For my family and me, CNCF has become more than an organisation—they are like family to us."

CNCF Healthcare Programme Child Beneficiary



COMMUNITY DEVELOPMENT SUMMARY

ACHIEVEMENTS

Since inception in 1989

4,327 CHILDREN received full-time residential care, including nutrition, education, and family support

957 HOMES built for families in unsafe living conditions

OBJECTIVE

At CNCF, our community development work is rooted in the belief that every child and family deserves the chance to live with dignity, stability, and opportunity. Our programmes support vulnerable children and marginalised families in overcoming poverty, exclusion, and inequality—laying the groundwork for resilience, inclusion, and long-term independence.

APPROACH

CNCF delivers holistic support—healthcare, education, vocational training and psychosocial care—tailored for children with disabilities, those at risk and families in deep hardship. By equipping youth with skills and resources for self-reliance, we break intergenerational poverty and foster community inclusion.

Our residential programmes provide stable, nurturing homes where orphaned, abandoned and disabled children heal, grow and prepare for adulthood through life-skills training and transitional support. We also offer secure housing and long-term case management to help at-risk families reintegrate and improve well-being.

All our community development initiatives are sustainable and community-led, addressing immediate needs while empowering participants to shape their futures and strengthen inclusive communities.



"I was moved to tears when members of the CNCF team came to our home to help my daughter. At a time when we didn't know where to turn, their visit meant a lot to us. They gave my daughter a chance we couldn't provide.

When my daughter was welcomed into CNCF's Tay Ninh Residential Centre for Visually Impaired Children, I was hopeful—but still anxious. But the first time I visited her there, I knew with certainty that I had made the right decision. She was safe, cared for, and treated with love and dignity.

She receives everything she needs—nutritious food, clothing, and a clean, supportive place to live. But what truly moved me was seeing her given the chance to learn, to play, and to feel joy. The environment is not only nurturing but empowering. It's a place where children like my daughter are not overlooked—they are seen, heard, and included.

This is what I always wished for her. CNCF has given her more than care—they've given her opportunity, and they've helped change the path of her life. For that, I will always be grateful."

**Parent of CNCF's Tay Ninh Residential Centre
For Visually Impaired Children Resident**

RURAL CAPITAL ASSISTANCE SUMMARY

ACHIEVEMENTS

Since inception in 1989

82,020 INDIVIDUALS gained access to clean water through tanks and filtration systems

226,889 INDIVIDUALS directly benefited from safer and faster journeys thanks to **6** newly built bridges

20,088 JOBS were created and local businesses strengthened through the disbursement of **6,696** microfinance loans

61,454 CHILDREN children benefited from **69** schools kindergartens rennovated and built

OBJECTIVE

CNCF strengthens the resilience of vulnerable communities by addressing critical infrastructure gaps that hinder access to basic services. Our capital assistance initiatives focus on improving conditions in education and healthcare, contributing to better living standards and long-term sustainable development.

APPROACH

CNCF delivers infrastructure projects tailored to the specific needs of disadvantaged communities—constructing bridges, classrooms, kindergartens, kitchens, playgrounds, and clean water systems. These efforts help reduce isolation, improve safety, and create environments where children can learn, hstay healthy, and reach their potential.

From building bridges that connect children in remote areas to schools and clinics, to installing rainwater harvesting systems that provide clean drinking water and improve hygiene in schools, each project responds to a real and pressing need. We also distribute bicycles to children living in remote areas, alongside road safety training, enabling safer, more consistent school attendance. Together, they form the foundation of CNCF's commitment to inclusive development, helping to create stronger, more connected, and more equitable communities for children and their families.



"Since the construction of the bridge, many things have changed for the better in our community. What used to be a difficult and sometimes dangerous journey—especially during the flood season—is now safer and more manageable for everyone. In the past, we had to walk through dirty, flooded roads just to get to school or the market. It was challenging, especially for children and the elderly.

Now, students can get to school more quickly, and families can travel without worrying about the weather. The bridge has brought people closer together—not just physically, but as a community. It's cleaner, safer, and has made daily life more convenient.

We are very grateful to CNCF for helping make this possible. This bridge is more than just a structure—it supports our daily lives and gives us peace of mind. As a community, we will do our best to look after it and make sure it remains useful for many years to come."

Beneficiary Community Resident of CNCF Bridge Construction, Hau Giang, Vietnam

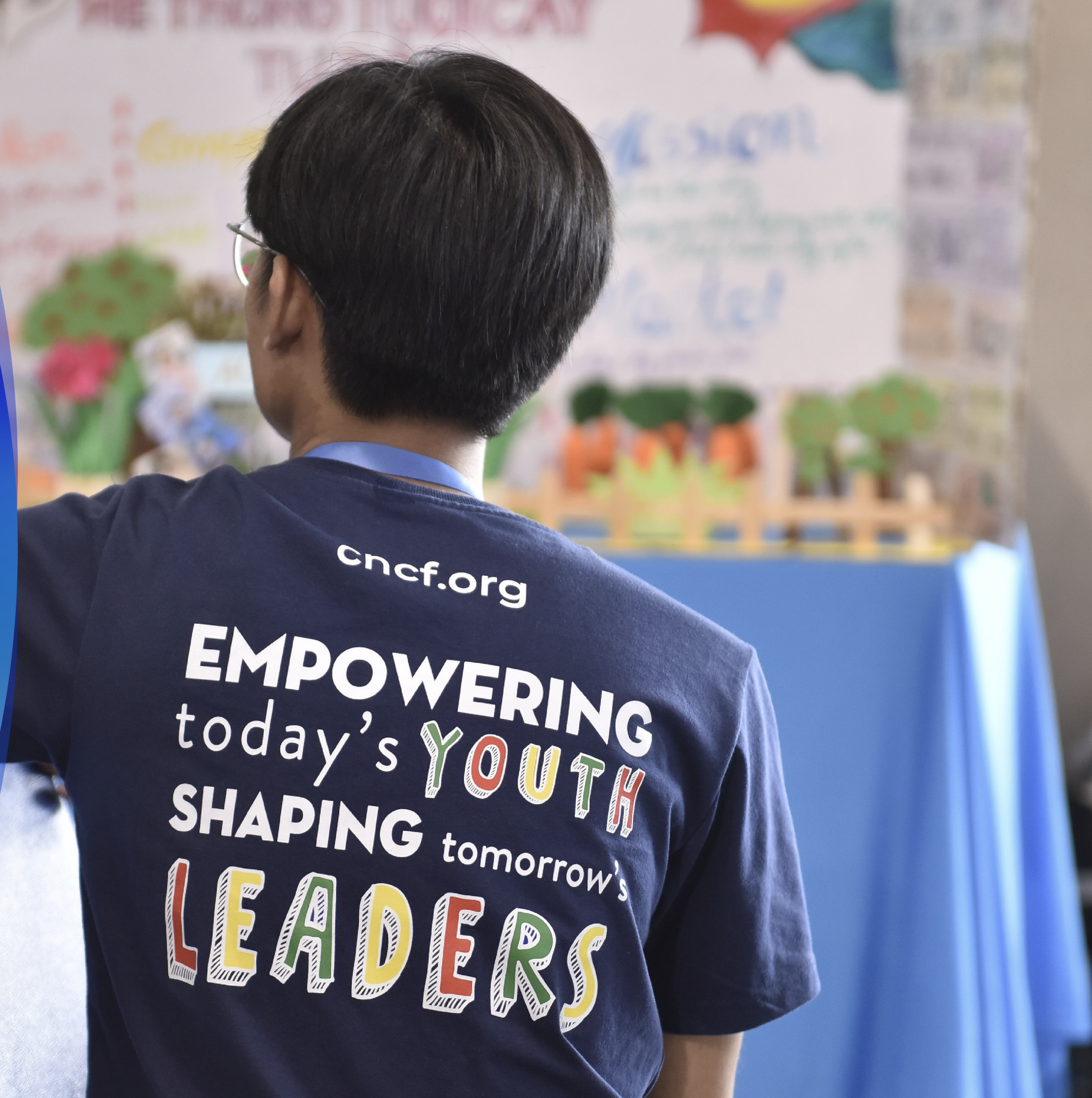
CHAPTER

03

Country Programme Highlights

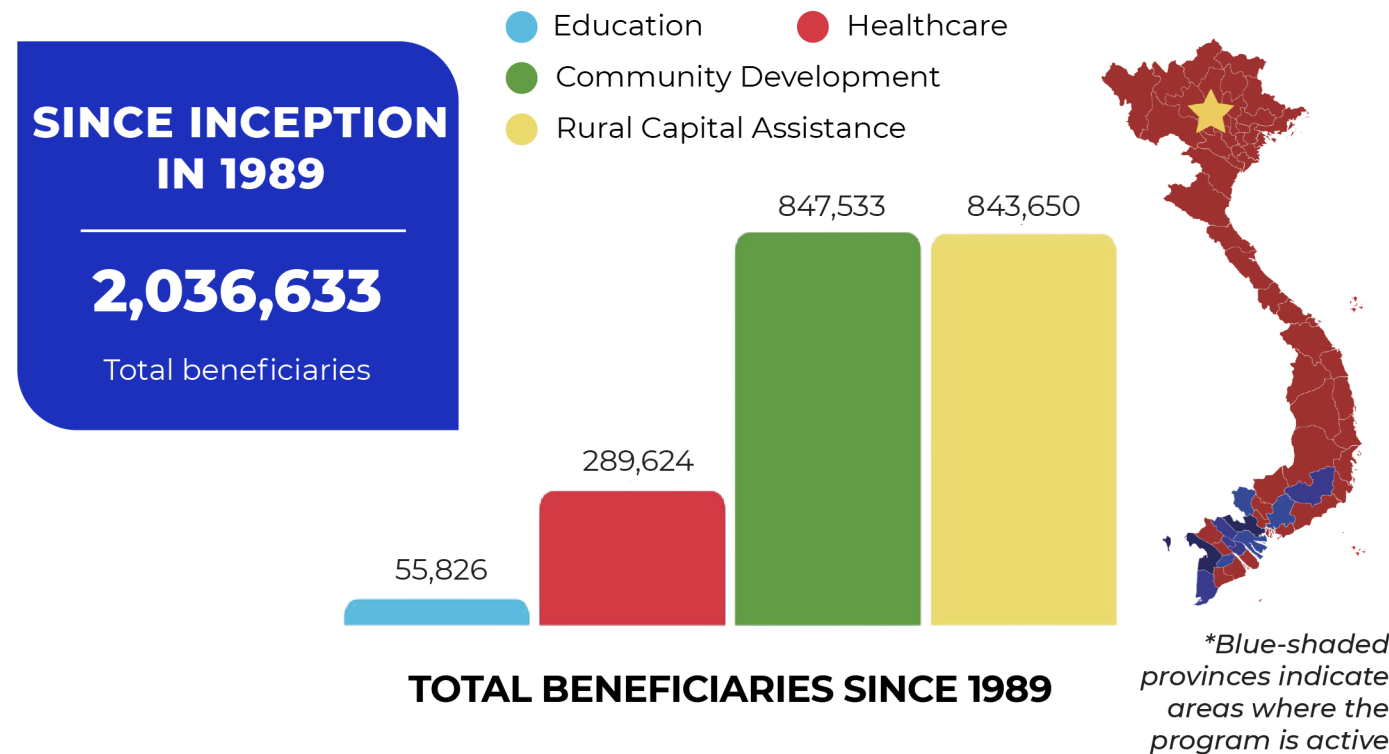
32 Vietnam Highlights

34 Mongolia Highlights



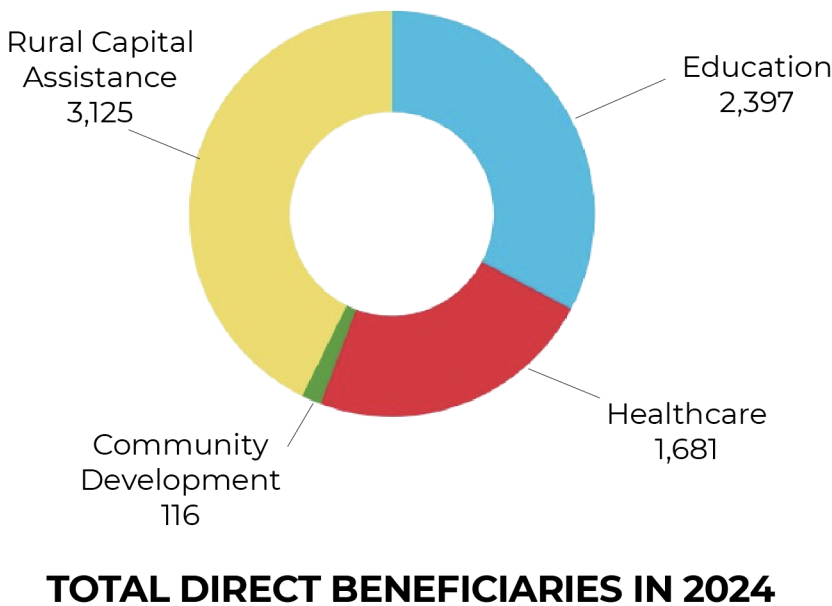
VIETNAM HIGHLIGHTS

Since its establishment in Vietnam, CNCF has developed comprehensive programmes that respond to the evolving needs of vulnerable children and communities. With a strong focus on education, healthcare, community development, and rural capital assistance, our work spans both urban and remote areas. These efforts are designed to improve quality of life, expand access to essential services, and promote long-term well-being and opportunity for Vietnamese people across 11 provinces.



In 2024

In 2024, most of our impact in Vietnam was delivered through infrastructure and capital projects, improving access to essential services for thousands of children and families. Complementing this, our education and healthcare programmes provided direct care, psychosocial support, and learning opportunities. The charts below highlight the scale and integrated focus of our work throughout the year.



Quan's Journey

From CNCF Child to PhD Candidate

More than 20 years ago, Quan arrived at CNCF's Sunshine Residential and Medical Centre as a child in need of protection, stability, and care. Last month, he returned—not as a beneficiary, but as a Master's graduate in Mathematics, now preparing to begin his PhD studies.



Quan with Christina Noble (Founder)



Quan's Masters Graduation 2024

Quan's journey is a testament to the long-term impact of CNCF's work. Through consistent support, education, and access to healthcare, Quan was able to overcome significant challenges and unlock his full potential. Today, he stands as a powerful symbol of what is possible when vulnerable children are given the chance to succeed.

"CNCF laid the foundation for my long-term development. I'm deeply grateful to return to my second home and be welcomed with such warmth."

His return reminds us that real change is measured not only in numbers, but in the lives transformed over time. Quan's story is one of many that inspire our continued commitment to breaking cycles of poverty and empowering the next generation.



Quan visited CNCF with Helenita Noble (CEO) 2024

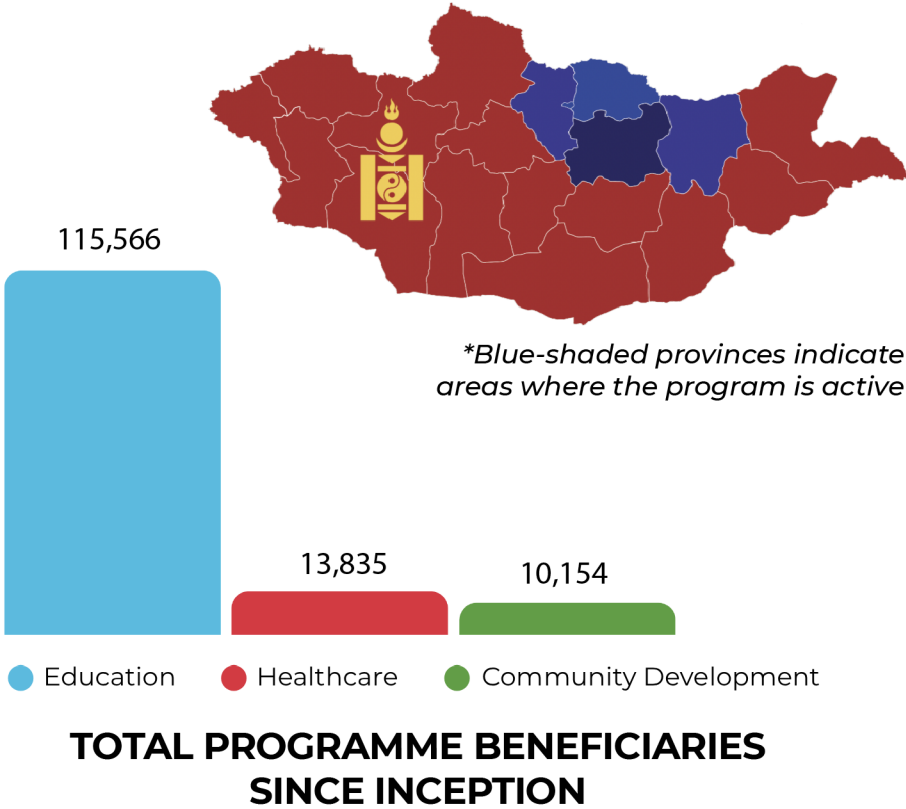
MONGOLIA HIGHLIGHTS

Since beginning operations in Mongolia, CNCF has focused on providing practical, long-term support to vulnerable children and families. Our programmes prioritise access to education, healthcare, and social support, with an emphasis on stability and inclusion. Working across five provinces, we continue to address local needs through structured services that support children's development and well-being, while strengthening families and communities.

**SINCE INCEPTION
IN 1997**

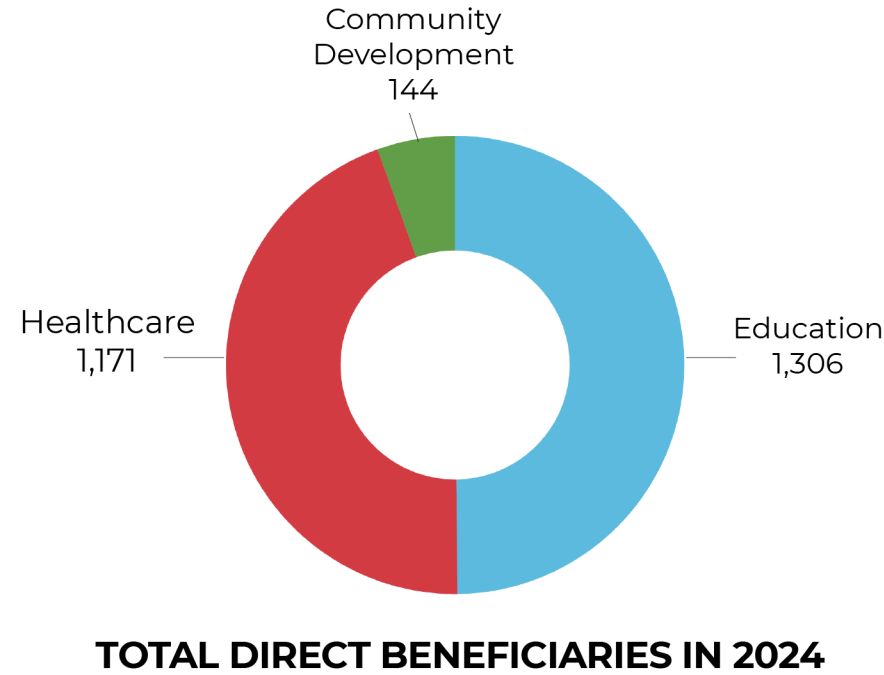
51,842
Total direct beneficiaries

87,713
Total indirect beneficiaries



In 2024

In 2024, the largest share of our impact came from education initiatives and psychological services, offering stability and resilience for children facing deep social challenges. Community-based housing and emergency relief also remained a key component of our approach. The charts below illustrate the focused, high-touch support provided across our Mongolia programmes in 2024.



Khandsuren's Journey

From Abandoned Orphan to Neo-Natal Nursing Specialist

Khandsuren's life is a powerful example of resilience and the long-term impact of child-centred care. Orphaned at nine, she entered CNCF's Blue Skies Ger Village in 2008 after the loss of both parents. With no family able to care for her, the Village became her home, providing safety, emotional support, and access to education. Through CNCF's holistic programmes, Khandsuren found stability and strength.

She excelled academically, discovered a passion for taekwondo, and developed the confidence to shape her own future. Supported by CNCF's Noble Education Programme, she pursued neonatal care nursing, and completed advanced training in South Korea.



9-year-old Khandsuren

"CNCF gave me everything. I was just a little girl with nowhere to go, and they gave me everything – love, support, and the courage to dream big."



Khandsuren works as a neonatal nurse in Mongolia's pediatric hospitals

Today, Khandsuren works as a neonatal nurse in one of Mongolia's largest pediatric hospitals. Her journey reflects CNCF's mission to ensure vulnerable children grow into empowered, self-reliant adults with the capacity to give back to their communities.



CHAPTER 04

Global Goals & CNCF's Goals

38 CNCF and the SDG Goals



OUR CONTRIBUTION TO THE UNITED NATIONS SUSTAINABLE DEVELOPMENT GOALS IN 2024

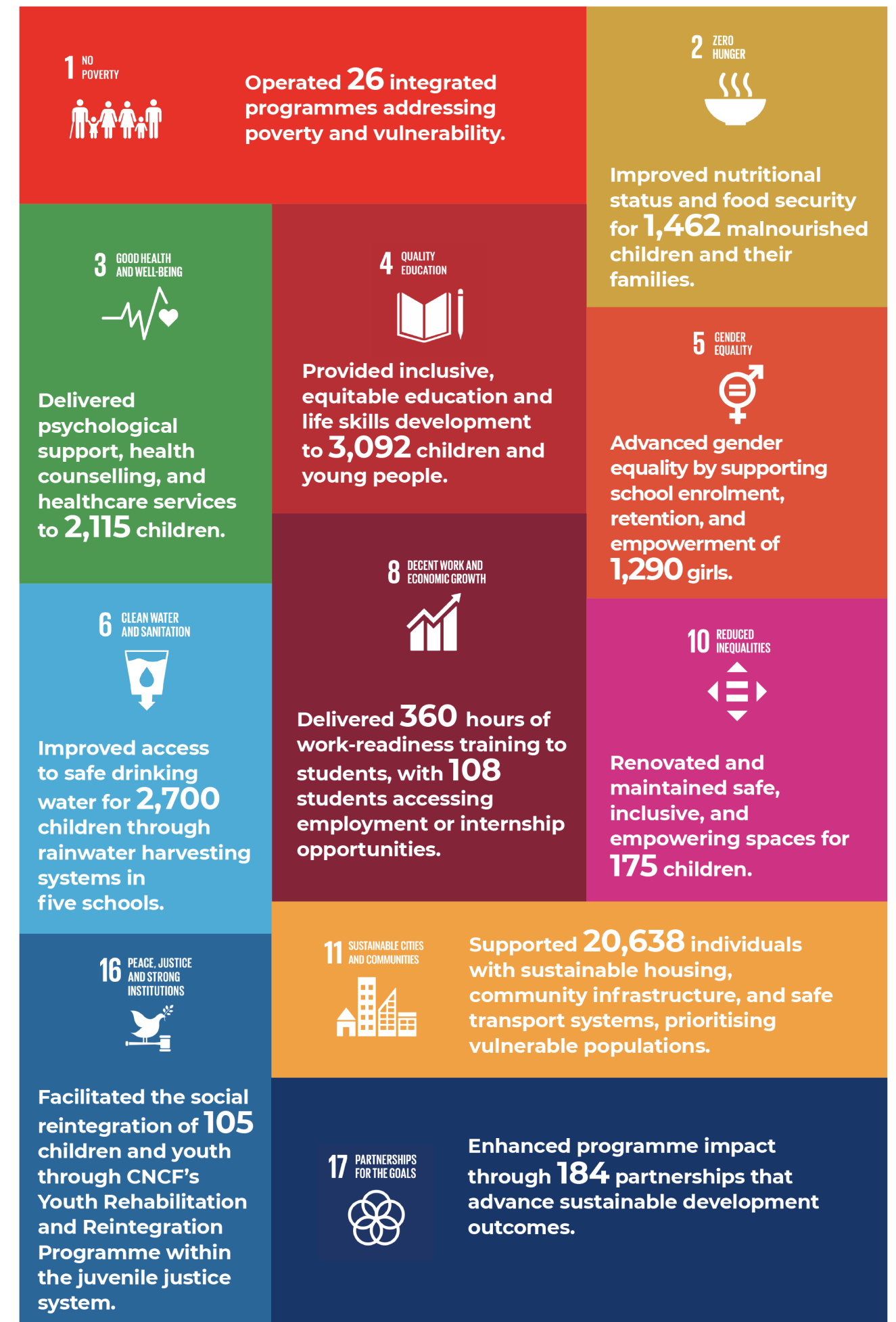
The United Nations Sustainable Development Goals (SDGs) offer a universal framework for addressing global challenges and building a more just and sustainable future. In 2024, **CNCF remained committed to these goals by meeting essential needs**—such as poverty, healthcare, nutrition, education, and clean water—through **practical, community-based solutions**.

Alongside these core efforts, **we placed growing emphasis on long-term systemic change** by strengthening community-led initiatives, fostering multi-stakeholder partnerships, and investing in inclusive education that empowers children and youth to build brighter futures. Through this dual approach, **CNCF advanced the SDGs with both immediate impact and lasting outcomes**.

Rooted in our vision of a world where every child is free from suffering, poverty, exploitation, and fear, our work is guided by deep compassion and a firm belief in every child's right to love, dignity, and opportunity. Our child and youth-centred approach tackles the root causes of poverty and social inequality, while honouring the voices and aspirations of the communities we serve.

Throughout 2024, we remained steadfast in our core values of love, compassion, respect, honesty, integrity, and accountability. With over 35 years of operational experience, CNCF continued to serve as a beacon of hope and resilience, empowering children and youth to lead lives of dignity, agency, and fulfilment.

Together with our partners, we are building a future where sustainable development is not just a goal, but a lived reality for the most vulnerable members of our global family.



CHAPTER 05

Governance, Finance & Accountability

42 Statement of Activities

43 Finance at a Glance

44 Governance Statement

45 Our Board Members



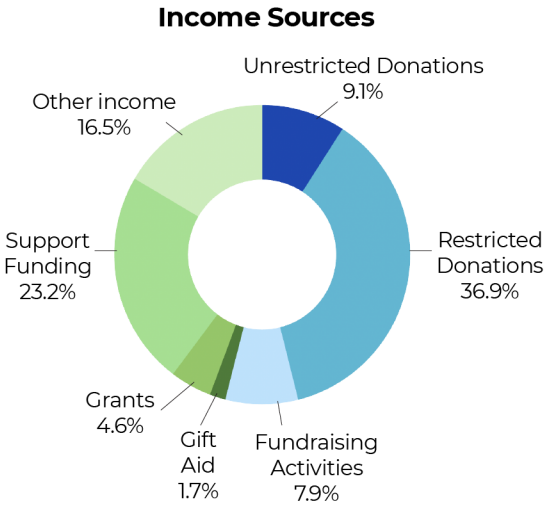
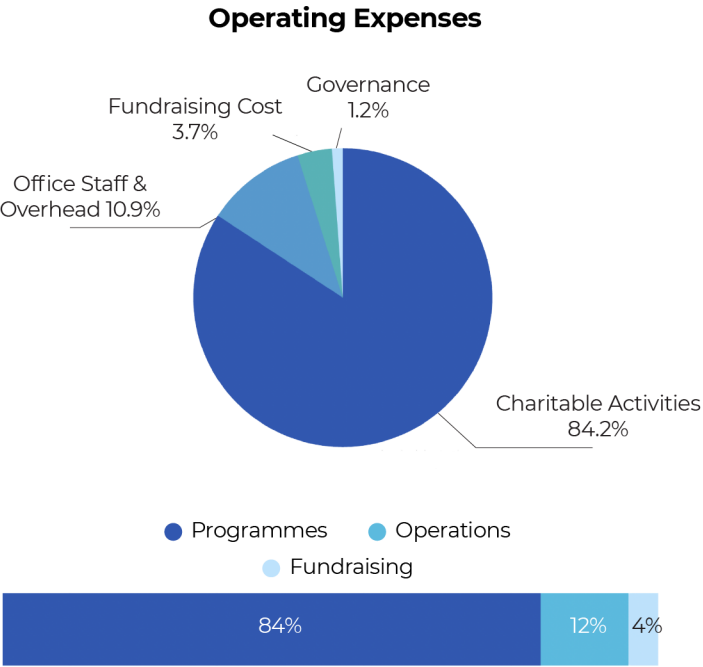
FINANCIAL STATEMENTS

In 2024, CNCF maintained financial stability while delivering vital support to vulnerable communities. We uphold strong governance and accountability, with externally audited accounts and regularly reviewed internal controls to ensure transparency, trust, and responsible stewardship of donor funds.

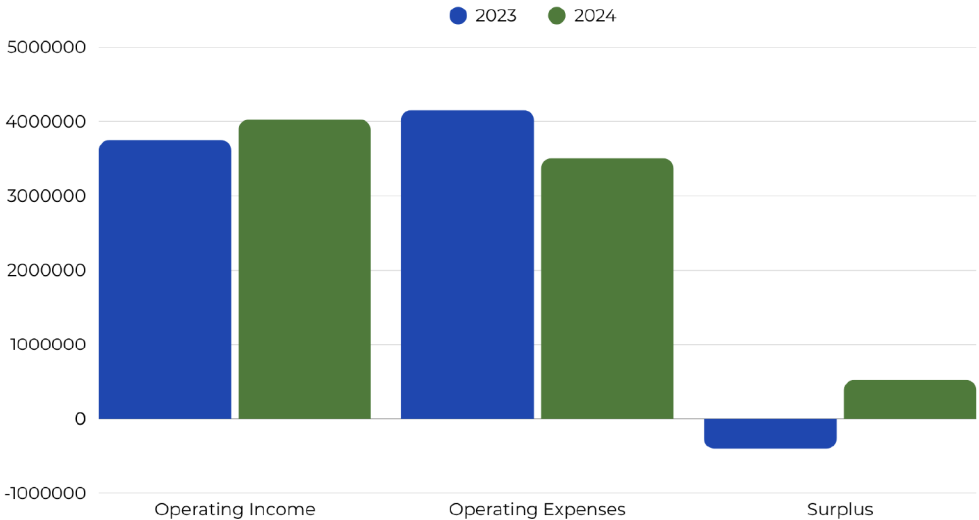
Assets	2024	2023
Current Assets		
Account receivables	\$138,095	\$140,901
Term deposits	\$0	\$290,818
Inventories	\$5,714	\$5,967
Prepayments and other receivables	\$154,964	\$250,058
Cash and cash equivalents	\$3,671,702	\$3,349,465
Total Current Assets	\$3,970,475	\$4,037,209
Non-Current Assets		
Property and equipment	\$221,060	\$256,497
Rental and utility deposits	\$2,575	\$2,562
Total Non-Current Assets	\$223,636	\$259,059
Total Assets	\$4,194,111	\$4,296,268
Liabilities		
Current Liabilities		
Donations received in advance	\$133,157	\$251,979
Accounts payables	\$19,915	\$698
Accrued expenses and other payables	\$117,436	\$142,158
Total Current Liabilities	\$270,508	\$394,835
Total Liabilities	\$270,508	\$394,835
Net Assets	\$3,923,603	\$3,901,433
Equity		
Retained Earnings	\$3,901,433	\$4,273,268
Current Year Earnings	\$22,170	(\$371,835)
Total Equity	\$3,923,603	\$3,901,433

FINANCE AT A GLANCE

In 2024, CNCF reduced total operating expenditure by 15.6% to USD 3.5 million, reflecting strong cost control without compromising programme delivery. Key reductions were seen in programme costs (-14.5%), administrative overheads (-21%), and fundraising costs (-30%). Governance costs rose by 20.7% due to strategic investments in compliance and institutional strengthening.



In 2024, CNCF's total operating income increased by 7.4% to USD 4.03 million, driven by the introduction of a new Support Funding stream contributing 23.2% of total income. However, traditional fundraising fell by 53.9%, and both grants and Gift Aid saw significant declines. Restricted and unrestricted funding remained relatively stable, while other income streams showed resilience with only minor fluctuations.



Performance Comparison Between 2023 and 2024

In 2024, CNCF's expenditure was 87.1% of income, with 84.2% directed to charitable activities. The Foundation turned a USD 406k deficit into a USD 520k surplus. Cash reserves rose to USD 3.67 million—covering 1.23 years of operations—progressing toward the three-year reserve target.

GOVERNANCE STATEMENT

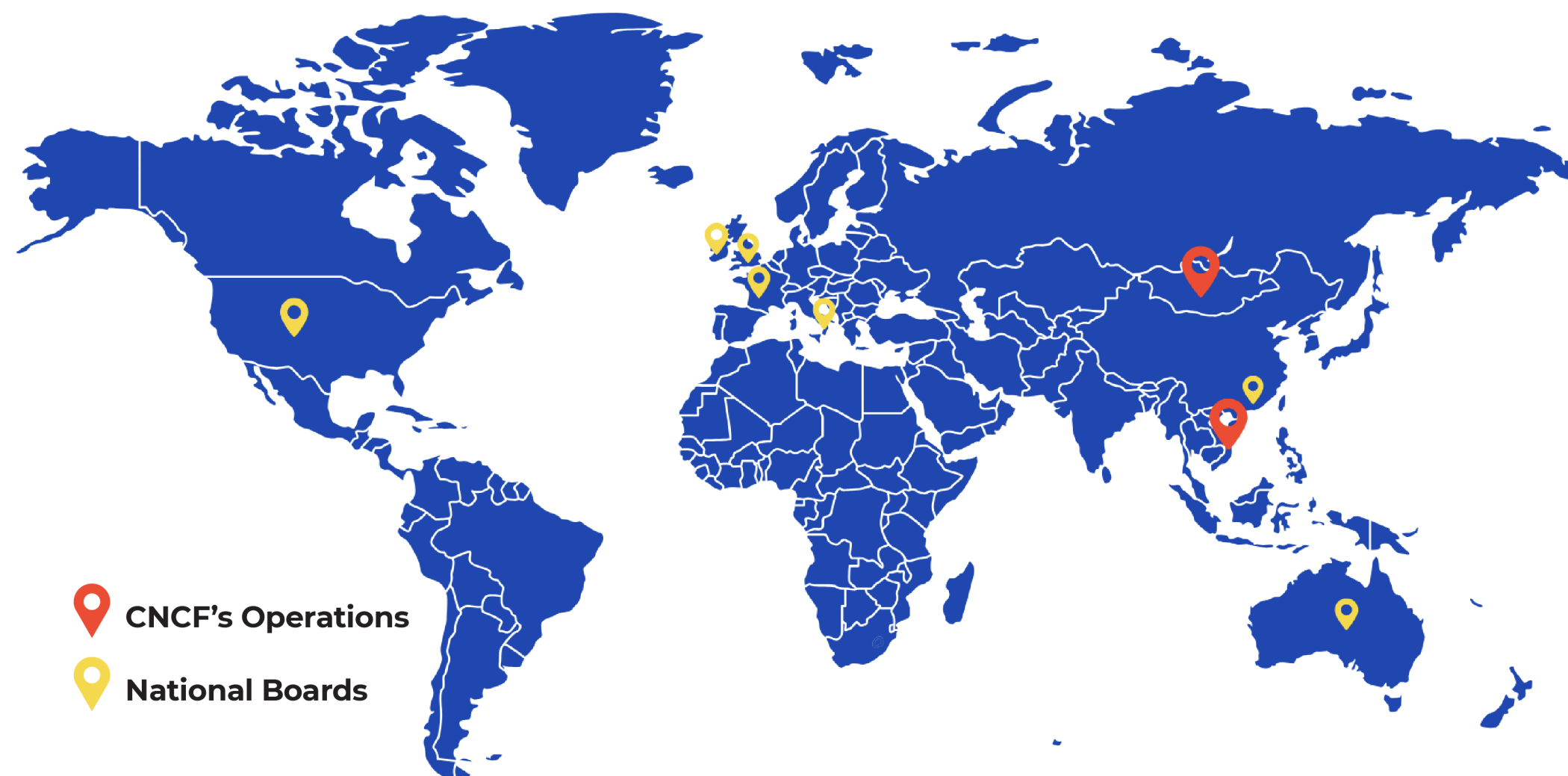
The **Christina Noble Children's Foundation (CNCF)** is governed by an International Board of Directors committed to **accountability, transparency,** and strategic oversight. CNCF is a registered charity in multiple jurisdictions—including **Ireland, the UK, Vietnam, Mongolia, the USA, Hong Kong, France, Italy, and Australia**—with governance tailored to each country's context.

The **International Board** meets **monthly** to provide global leadership and ensure programme alignment. National boards convene **quarterly** to oversee local operations and regulatory compliance. The CEO, supported by a Senior Management Team, leads daily operations and reports directly to the International Board, ensuring delivery of **strategic goals and programme integrity.**

CNCF maintains strong governance systems, including **financial controls, risk management,** and **safeguarding policies.** **Child protection** is embedded across all operations, with mandatory training, clear reporting procedures, and a **Code of Conduct** for all staff, volunteers, and partners.

We work closely with **local authorities** to ensure compliance with national standards and to strengthen trust and community ownership. All programmes are subject to **regular monitoring and annual inspections.**

Strategic decisions are informed by **data, community feedback,** and the **voices of children and youth.** All financial accounts are **externally audited** and publicly available. CNCF is committed to **ethical stewardship** and continuous improvement, upholding the trust placed in us by those we serve.



- 📍 **CNCF's Operations**
- 📍 **National Boards**

International Board Members

- Susanne Andre
- Adam Cox
- Erik Davies
- Thomas Minter
- Helenita Noble (CEO)

National Board Chairs

- Thomas Ward (UK)
- Jean Murtagh (Ireland)
- Karine Dalle (France)
- Erica Cecilliato (Italy)
- Chris Mikosh (USA)
- Thomas Minter (Hong Kong)
- Mark Devadason (Australia)

CHAPTER 06

Our Noble Circles of Support

48 Our Donors, Partners
and Supporters



WITH DEEPEST GRADTITUDE

We extend our deepest gratitude to all of our partners and donors, especially to the people and government of Vietnam and Mongolia—those acknowledged here and the many more who continue to stand beside us as part of the wider CNCF family. *Your unwavering support, shared values, and commitment to collaboration have been instrumental in strengthening our impact and expanding our reach.* To all those who give, support, and believe in our mission, your generosity powers every step we take and brings light and hope into the lives of the children and communities we serve. Together, we are not just delivering programmes—we are building and transforming futures of children. Your partnership is a cornerstone of sustainable change, and we are truly honoured to walk this path with you. **Thank you for your trust, compassion, and steadfast belief in a better future for every child.**

Here are just some of our donors, partners, and supporters.

OUR DONORS



EDUCATION & HEALTHCARE PARTNERS



PARTNERS



INSTITUTIONAL SUPPORT



CHAPTER 07


Act With Us

52 Vision and Strategy

54 Give Hope Today

55 How to Join Us





This next chapter builds on CNCF's proven strengths and will be delivered through four strategic pillars: Transformative Education, Health Systems Strengthening, Sustainable Community Development, and Organisational Excellence.

VISION AND STRATEGY

Grounded in **nearly forty years of frontline impact**, we will expand quality schooling, digital literacy and holistic life-skills through our **Education Programmes** and the new **Noble Academies**; empower local paediatric teams and ensure equitable access to advanced care via our **Medical Exchange Programme**; **invest in safe housing, clean water and resilient infrastructure** to break cycles of poverty; and **strengthen our data systems, governance and local leadership**—always centring children's voices to drive lasting, community-owned change.

1. Transformative Education

Access to transformative education remains central. Expanding CNCF's **Education Programmes**, thousands of marginalised children will gain tools, knowledge and self-belief through vocational training, inclusive learning, digital literacy and creative expression. *In five years, we will launch Noble Academies—holistic life-education centres integrating emotional intelligence, ethics, leadership, creativity and self-actualisation—to cultivate resilience, identity and empowered community agents.*

2. Health Systems Strengthening

CNCF will strengthen health systems by empowering local paediatric teams via our **Medical Exchange Programme** for knowledge transfer from world-class clinicians. *We will ensure equitable access to advanced medical care, psychological support and early intervention.* Through rural outreach and global partnerships, we'll improve child survival and mental-health outcomes while tackling long-term trauma, poverty and social-exclusion.

3. Sustainable Community Development

At the community level, CNCF will invest in critical infrastructure, safe housing, clean water, and inclusive support services. *These capital development initiatives will create dignified living conditions and pathways for long-term self-reliance*, particularly in rural and underserved areas.

4. Organisational Excellence

Internally, CNCF will drive organisational excellence through improved data systems, governance transparency, and local leadership development. *We remain committed to a culture of compassion, accountability, and local ownership*—ensuring that children's voices are at the heart of every programme and policy.

GIVE HOPE TODAY

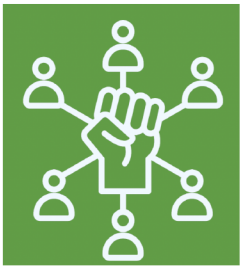
At the Christina Noble Children's Foundation, we believe that every child deserves a safe, healthy, and hopeful future. **For 35 years**, we have worked alongside communities in Vietnam and Mongolia to provide **essential care, education, and support to children and families** facing difficult circumstances.

This journey has only been **possible** thanks to the **kindness and commitment** of people like you. **Your support**—whether through donations, partnerships, or simply sharing our story—helps us **continue the legacy of Christina Noble and reach more children in need** to provide them with **essential foundations: love, education, and healthcare**.

We warmly invite you to **empower children's future with us**. There are many ways to get involved, and each contribution, big or small, makes a real difference. Together, we can continue building brighter futures and creating long-term, meaningful impact—one child, one family, and one community at a time. The children's hope starts with you.



HOW TO JOIN US



Transformational Giving & Legacy Support

Enable long-term impact through major gifts, endowments, or legacy bequests. Let's build a better future together.

Contact: international@cncf.org



Volunteer Your Expertise

Support CNCF with skills in fundraising, communications, education, and strategy to gain meaningful experience while advancing our mission.

***Opportunities are based on operational and geographic**



Strategic Partners & Philanthropy

We co-create high-impact solutions with philanthropists and institutions. Receive tailored engagement, reporting, and visibility.

Contact: partnerships@cncf.org



Make a Donation

Every contribution matters. Support CNCF's urgent and ongoing needs through one-off or recurring donations.

Donate securely at: www.cncf.org/donate



Corporate Engagement & CSR Alignment

Align your ESG goals with CNCF's mission through funding, employee engagement, or volunteering. Let's drive impact together.

Contact: partnerships@cncf.org



Raise Awareness

Your voice can change lives. By sharing CNCF's mission, you help us reach more children and communities in need. Follow us online, invite us to speak, or connect us with partners. Together, we can amplify hope and lasting impact.



Child Sponsorship: Invest a Life

Support a child's full development journey through education, healthcare, and psychosocial care. Receive personal updates and impact stories.

Learn more at: www.cncf.org/sponsor-a-child/



SCAN TO FIND OUT MORE



35
YEARS
OF GIVING CHILDREN BACK
THEIR CHILDHOOD
1989 - 2024

✉ international@cncf.org
🌐 www.cncf.org
📄 Christina Noble Children's FoundationInt
📘 @ChristinaNobleChildrensFoundationInt
✉ @CNCF_int
📱 christina_noble_foundation

CHRISTINA NOBLE CHILDREN'S FOUNDATION

CNCF'S OPERATIONS

VIETNAM

📍 165A Nguyen Van Huong, An Khanh
Ward, HCMC, Vietnam
☎ (+84) 283 932 6484

MONGOLIA

📍 Gerel Centre, 1/4 Jigjidjav Street,
Ulaanbaatar 15160
☎ (+976) 11 315 611

CNCF'S GLOBAL FUNDRAISING HUBS

AUSTRALIA & NEW ZEALAND

✉ GPO Box 2767, Sydney
✉ australia@cncf.org
Registered Charity and Incorporated
Association: No. A003961916

ITALY

📍 Christina Noble Children's Foundation Italia APS
Via San Maurizio 186 10073 - Cirie (To) - Italia
☎ +39 351 81 600 26
✉ italia@cncf.org

FRANCE

📍 Association Christina Noble Château Ouvrier
5 Place Marcel Paul 75014 Paris
☎ +33 (0) 6 47 18 76 39
✉ france@cncf.org
Registered Charity No. 3927996640002

IRELAND

📍 22 South Frederick Street Dublin 2, Ireland
☎ +353 1 645 5555
✉ ireland@cncf.org
Registered Charity No. CHY12636

HONG KONG

📍 Level 23, One Island East, 18 Westlands
Road, Quarry Bay, HKSAR
☎ +852 3750 7771
✉ hongkong@cncf.org
Registered Charity No. 91/4639

USA

📍 41 Schermerhorn Street #1003, Brooklyn, NY 11201,
United States
✉ usa@cncf.org
501(c)(3) EIN: #94-3165937

UNITED KINGDOM

📍 Office 3c, Regus, 79 College Road, Harrow,
HA1 1BD, United Kingdom
☎ +44 20 7381 8550
✉ uk@cncf.org
Registered Charity No. 1007484

